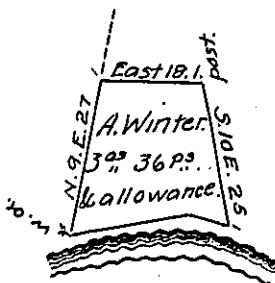


John Bingman.

Adam Winter.
(late John Reed.)



Courses up Middlecreek

N. 77. W. 7.

S. 79. W. 20.

A Draught of a small tract of land situate in Beaver township Union County, surveyed the 19th day of April 1839 for Adam Winter in pursuance of his warrant dated the 6th day of February 1839.

pr.

To John Taylor, Esqr,

Surveyor Genl. Pennsylv^a.

Solomon Engel, D.S.

IN TESTIMONY that the above is a copy of the original remaining on file in the Department of Internal Affairs of Pennsylvania, made conformably to an Act of Assembly approved the 16th day of February, 1833, I have hereunto set my Hand and caused the Seal of said Department to be affixed at Harrisburg, this twenty fifth day of March, 1908.

Murray Houck
Secretary of Internal Affairs.